



COBRA KING

EON TOURS, TURKEY & GREECE - www.eontours.com



Under Sail



Under Sail



Stern Outdoor Dining Area



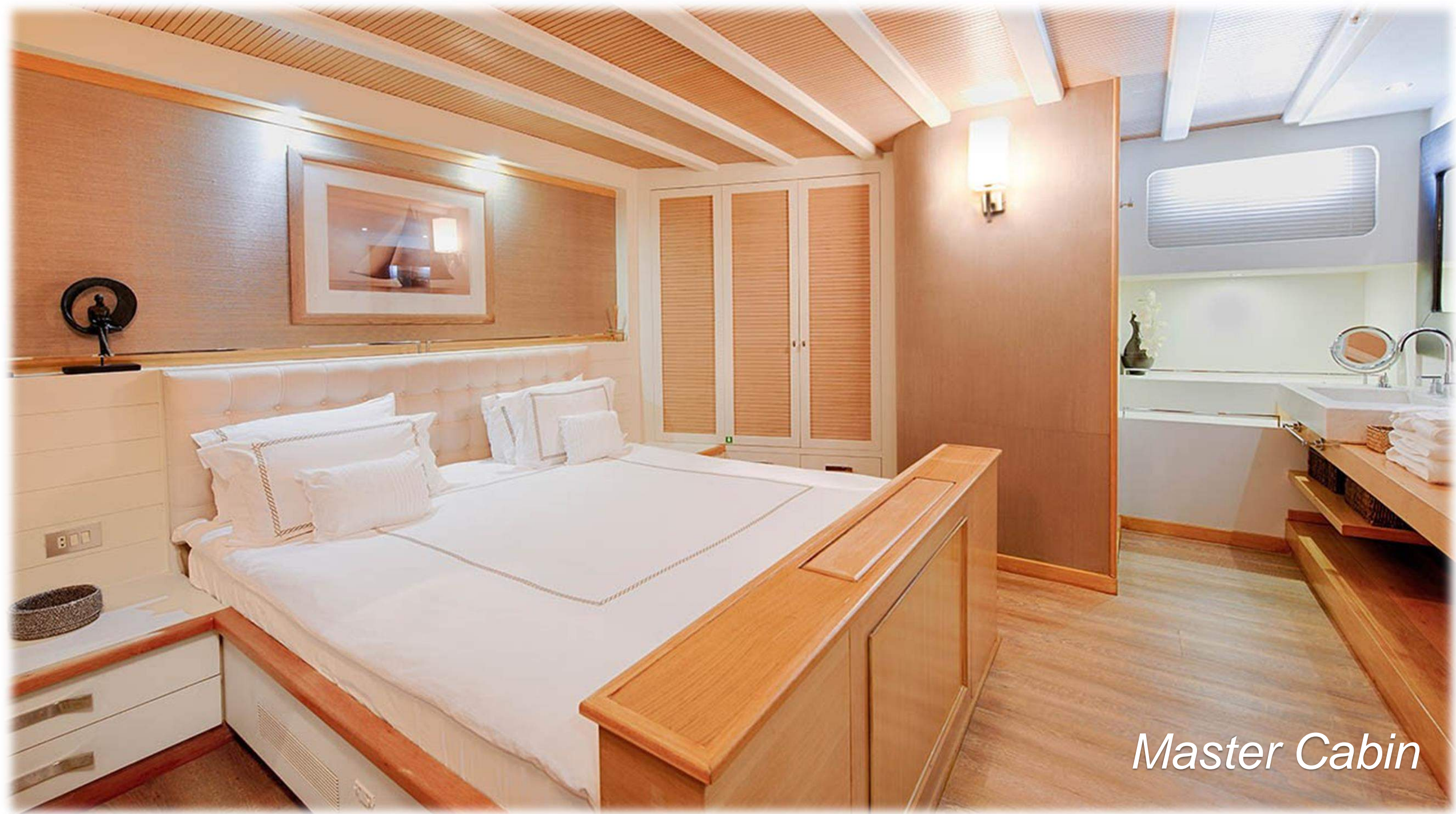
Deck Lounging Area



Bow Outdoor Lounging Area



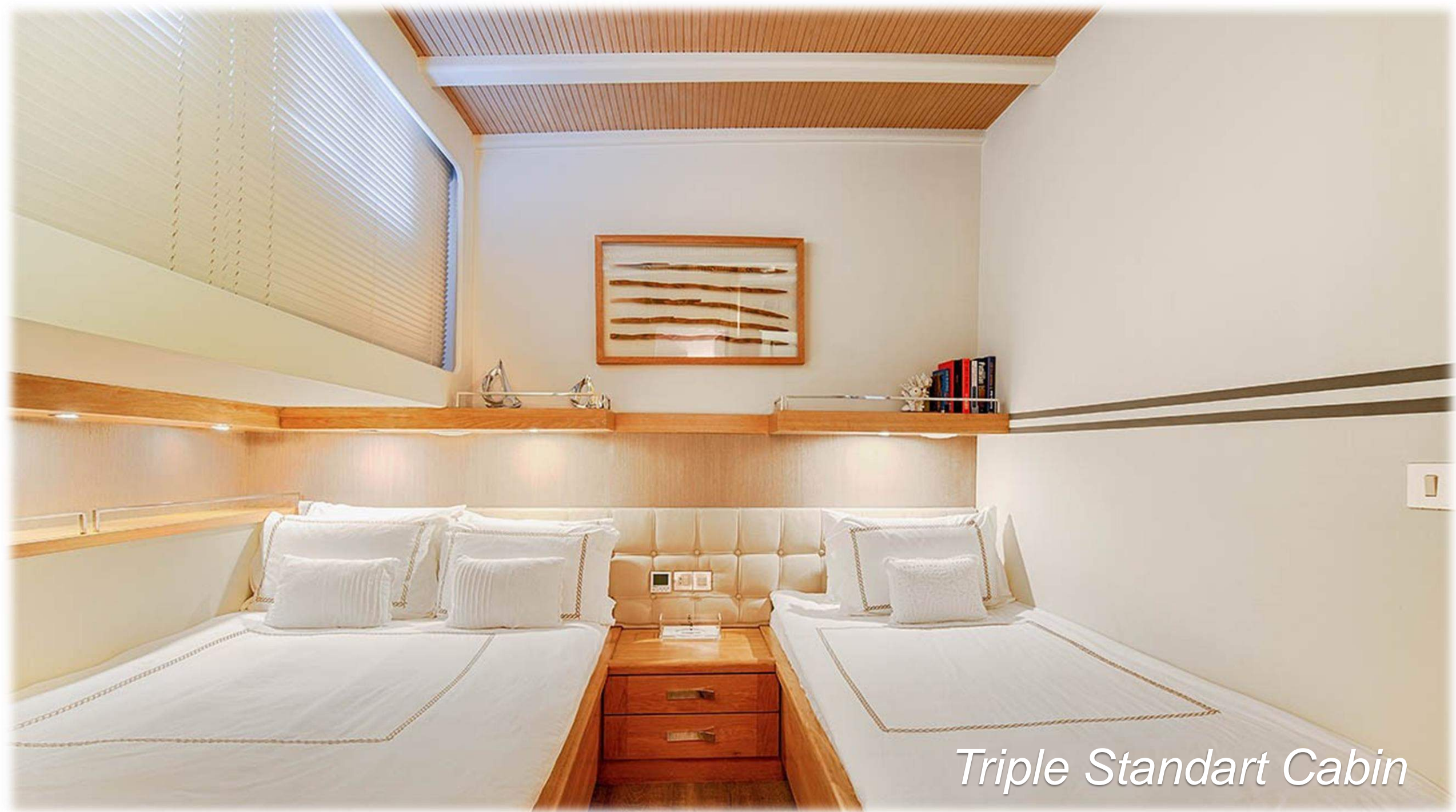
Saloon and Indoor Dining Table



Master Cabin



Double Standart Cabin

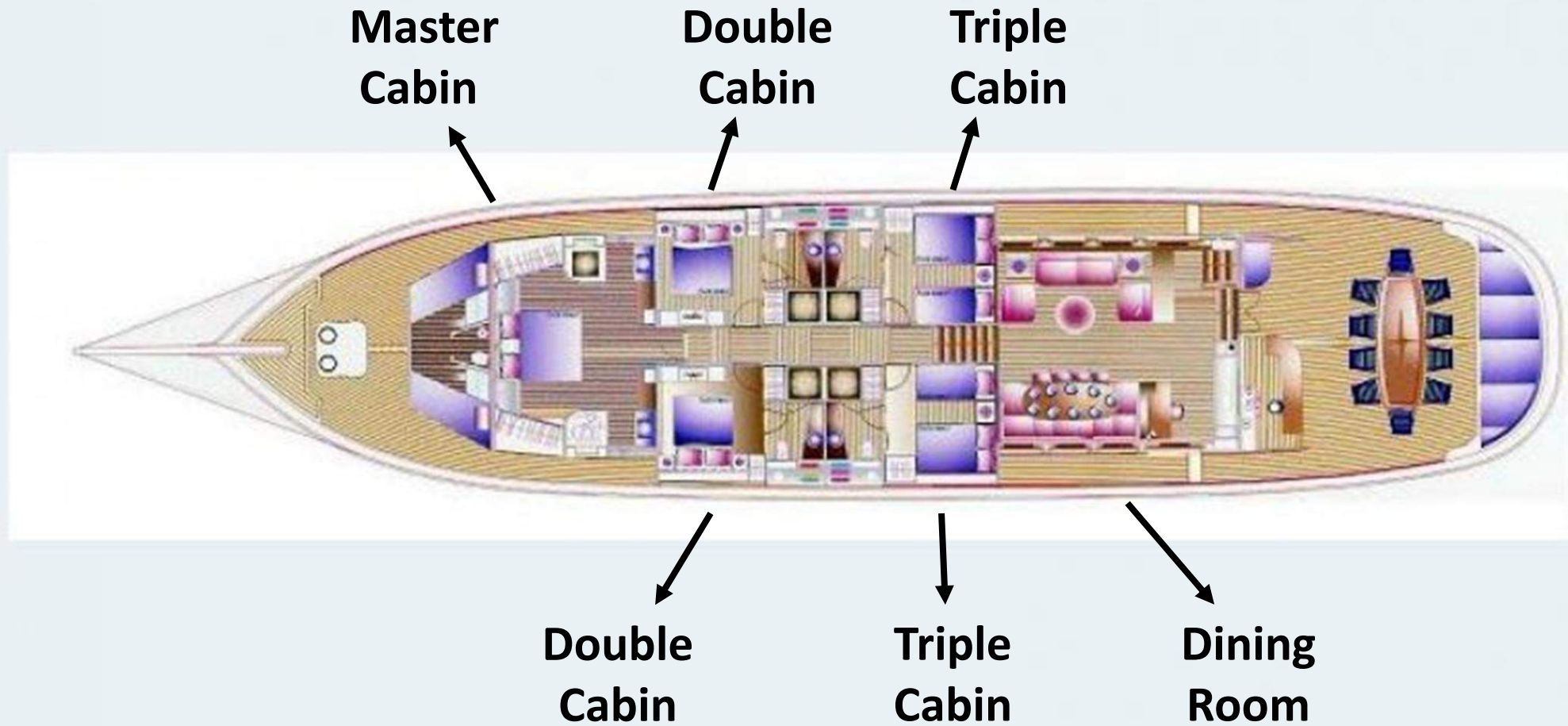


Triple Standart Cabin



En-Suite Shower, Bath, Head

Accommodation On Board Cobra King



TECHNICAL SPECIFICATIONS

Type: Luxury Gulet

Built: 2005

Refit: 2011

L.O.A: 38.6 m / 126 ft

Beam: 8,50 m / 27.5 ft

Draft: 2.7 m / 8.ft

Engine: 2 X 440 Hp Man

Generator: 2 X 27.5 Kwa

Power Supply: 12 + 24 + 220 V

Water Capacity: 4.000 lt.

Max. Cruising Speed: 12 Knots

Cabins:

1 Master Cabin

2 Double Cabins

2 Tripel Cabins

Crew Capacity: 6

Passenger Capacity: 12

EQUIPMENT ON BOARD

- Led TV in saloon and all cabins
- Internet connection
- Music system in saloon and all cabins
- Dish washer, Coffee Maker, Microwave, Ice Machine, Oven, Fridge
- Full sailing equipment
- Radar, GPS, AIS-A CLASS,Vhf, Navtex, Shart, Epirb,
- Depth sounder and fish finder
- Watermaker
- Full regulation safety equipment
- Fishing equipment, snorkelling
- Canoe, Stand up paddle board, Wakeboard, Ringo
- Jetski , Seabob, Mono Ski, Banana (On request)
- Dinghy with 70 Hp outboard engine